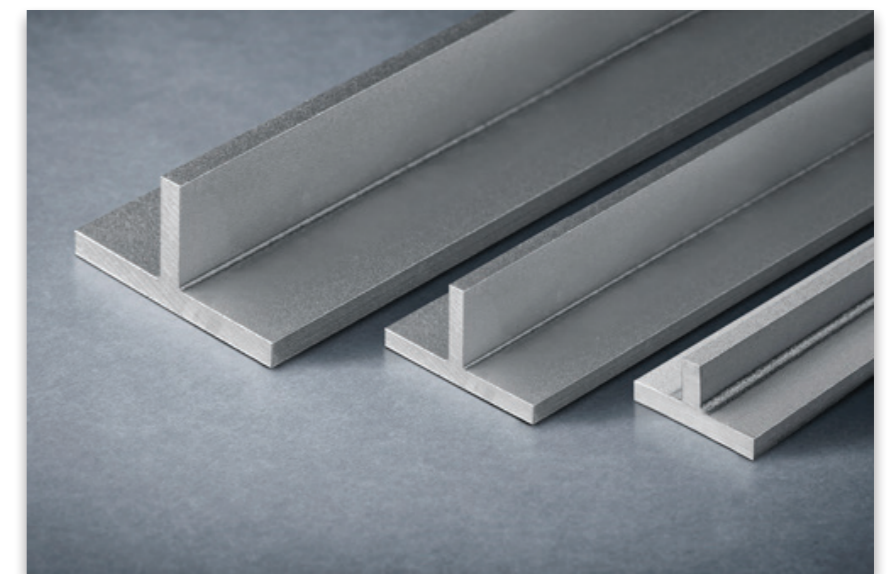


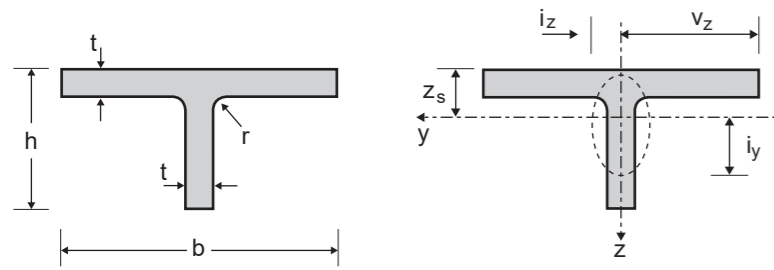
STAINLESS STEEL

WIDE FLANGE TEES



LASER WELDED PROFILES

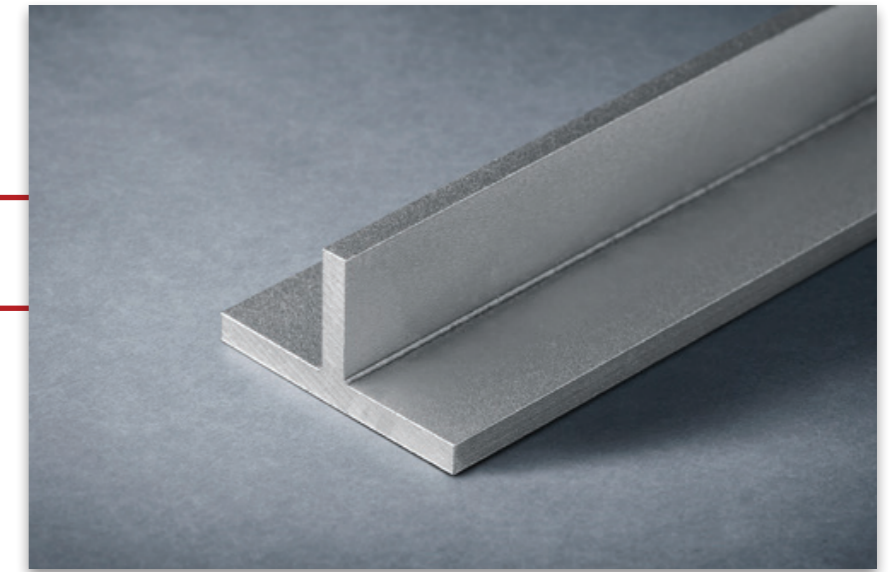
T WIDE FLANGE TEES



STAINLESS STEEL

Product Description

Dimensions: in accordance with EN 10055
 Tolerances: in accordance with EN 10055
 Grade according to EN 10088-3: 1D
 Surface condition: blasted and pickled



General properties							Structural properties						
Designation		Dimensions					Position of axes y-y	Axis y-y			Axis z-z		
	G kg/m	h mm	b mm	t mm	r* mm	A mm ² x10 ²	Z _s mm	I _y mm ⁴ x10 ⁴	W _{ely} mm ³ x10 ³	i _y mm x10	I _z mm ⁴ x10 ⁴	W _{elz} mm ³ x10 ³	i _z mm x10
TB 20	1.81	20	40	4	2	2.26	4.85	0.62	0.41	0.52	2.14	1.07	0.97
TB 25	2.81	25	50	5	2	3.52	6.07	1.50	0.79	0.65	5.23	2.09	1.22
TB 30	3.73	30	60	5.5	2	4.66	7.09	2.91	1.27	0.79	9.93	3.31	1.46
TB 35	4.77	35	70	6	2	5.96	8.12	5.11	1.9	0.93	17.20	4.92	1.70
TB 40	5.22	40	80	7	2	7.93	9.34	8.87	2.89	1.06	29.96	7.49	1.94
TB 50	9.64	50	100	8.5	2	12.04	11.58	21.16	5.51	1.33	71.05	14.21	2.43
TB 60	13.61	60	120	10	2	17.02	13.82	43.18	9.35	1.59	144.42	24.07	2.91

Other custom sizes are available upon request

* Profiles are laser welded with full penetration, equivalent to hot rolled (r = laser seam).