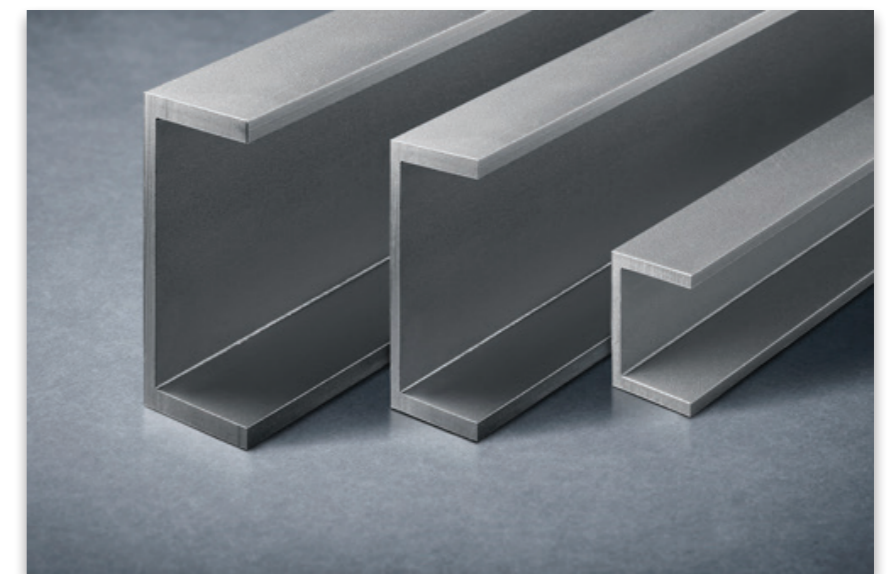


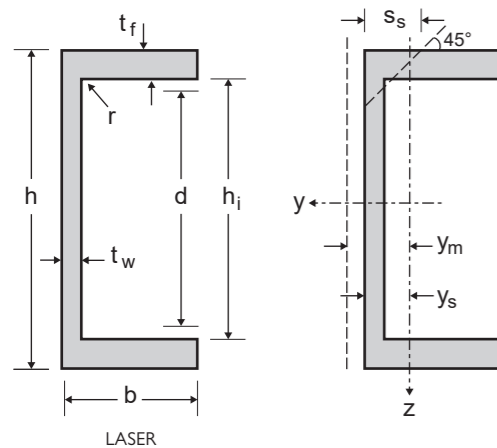
**STAINLESS STEEL**

# UPE CHANNELS



**LASER WELDED PROFILES**

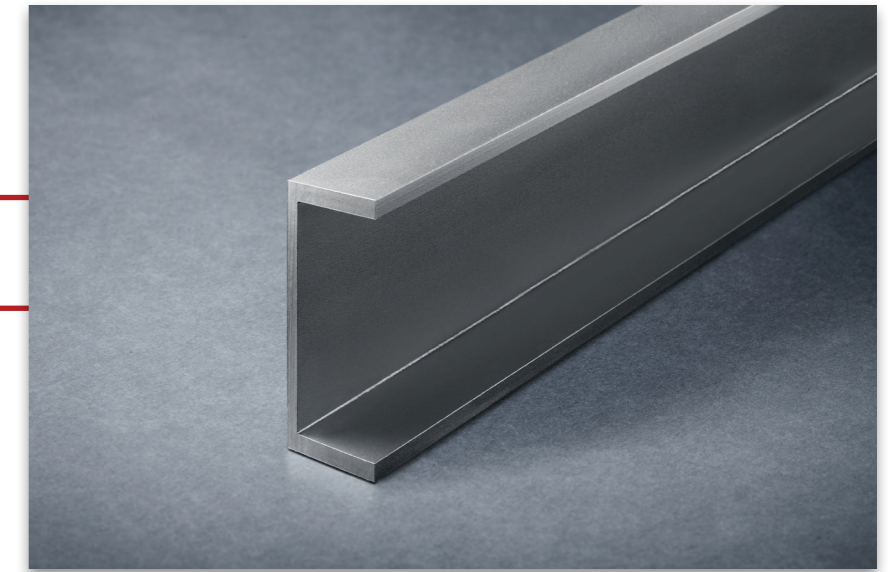
# UPE CHANNELS WITH PARALLEL FLANGES



## STAINLESS STEEL

### Product Description

Dimensions: in accordance with EN 10365  
 Tolerances: EN 10279: 2000  
 Grade according to EN 10088-3: 1D  
 Surface condition: blasted and pickled



General properties							Structural properties																
Designation		Dimensions					Dimensions for detailing		Strong axis y-y					Weak axis z-z									
	G kg/m	h mm	b mm	t <sub>w</sub> mm	t <sub>f</sub> mm	A mm <sup>2</sup> x10 <sup>2</sup>	h <sub>i</sub> mm	d mm	I <sub>y</sub> mm <sup>4</sup> x10 <sup>4</sup>	W <sub>ely</sub> mm <sup>3</sup> x10 <sup>3</sup>	W <sub>ply</sub> mm <sup>3</sup> x10 <sup>3</sup>	i <sub>y</sub> mm x10	A <sub>vz</sub> mm <sup>2</sup> x10 <sup>2</sup>	I <sub>z</sub> mm <sup>4</sup> x10 <sup>4</sup>	W <sub>elz</sub> mm <sup>3</sup> x10 <sup>3</sup>	W <sub>plz</sub> mm <sup>3</sup> x10 <sup>3</sup>	i <sub>z</sub> mm x10	S <sub>s</sub> mm	I <sub>t</sub> mm <sup>4</sup> x10 <sup>4</sup>	I <sub>w</sub> mm <sup>6</sup> x10 <sup>9</sup>	y <sub>s</sub> mm x10	y <sub>m</sub> mm x10	
UPE 80	7.7	80	50	4	7	9.66	66.0	62.0	103.31	25.83	30.02	3.27	3.08	24.78	7.91	13.58	1.60	12.18	1.28	0.24	1.87	3.73	
UPE 100	9.7	100	55	4.5	7.5	12.09	85.0	81.0	200.19	40.04	46.43	4.07	4.33	37.54	10.57	18.12	1.76	13.18	1.81	0.56	1.95	3.94	
UPE 120	11.9	120	60	5	8	14.82	104.0	100.0	348.89	58.15	67.46	4.85	5.78	54.44	13.72	24.48	1.92	14.18	2.50	1.20	2.03	4.15	
UPE 140	14.3	140	65	5	9	17.82	122.0	118.0	579.04	82.72	95.45	5.70	6.75	77.43	18.09	32.14	2.08	15.18	3.62	2.34	2.22	4.57	
UPE 160	16.9	160	70	5.5	9.5	21.07	141.0	137.0	883.44	110.43	127.66	6.47	8.48	105.48	22.49	40.37	2.24	16.18	4.74	4.18	2.31	4.78	
UPE 180	19.6	180	75	5.5	10.5	24.51	159.0	155.0	1318.01	146.45	168.51	7.33	9.55	141.98	28.44	50.82	2.41	17.18	6.52	7.16	2.51	5.21	
UPE 200	22.6	200	80	6	11	28.30	178.0	174.0	1856.83	185.68	214.15	8.10	11.58	185.21	34.31	61.75	2.56	18.18	8.22	11.57	2.60	5.43	
UPE 220	26.5	220	85	6.5	12	33.16	196.0	192.0	2618.40	238.04	274.92	8.89	13.78	244.13	42.38	76.45	2.71	19.68	11.34	18.44	2.74	5.72	
UPE 240	30.1	240	90	7	12.5	37.57	215.0	211.0	3495.93	291.33	337.20	9.65	16.19	307.84	49.94	90.43	2.86	20.68	13.91	27.76	2.84	5.94	
UPE 270	35.1	270	95	7.5	13.5	43.89	243.0	239.0	5122.15	379.42	440.09	10.80	19.52	397.74	60.56	109.90	3.01	22.18	18.60	45.54	2.93	6.16	
UPE 300	44.5	300	100	9.5	15	55.67	270.0	266.0	7658.85	510.59	601.10	11.73	27.39	535.09	75.51	136.38	3.10	25.68	29.93	75.46	2.91	6.04	
UPE 330	53.1	330	105	11	16	66.40	298.0	294.0	10718.85	649.63	772.24	12.71	34.88	678.56	89.62	161.05	3.20	28.18	41.85	116.30	2.93	6.01	
UPE 360	61.2	360	110	12	17	76.54	326.0	322.0	14478.32	804.35	960.80	13.75	41.52	840.92	105.04	188.51	3.31	30.18	54.87	172.40	2.99	6.12	
UPE 400	72.4	400	115	13.5	18	90.56	364.0	360.0	20545.68	1027.28	1238.54	15.06	51.95	1042.47	122.57	219.99	3.39	32.68	75.14	266.30	3.00	6.06	

Other custom sizes are available upon request