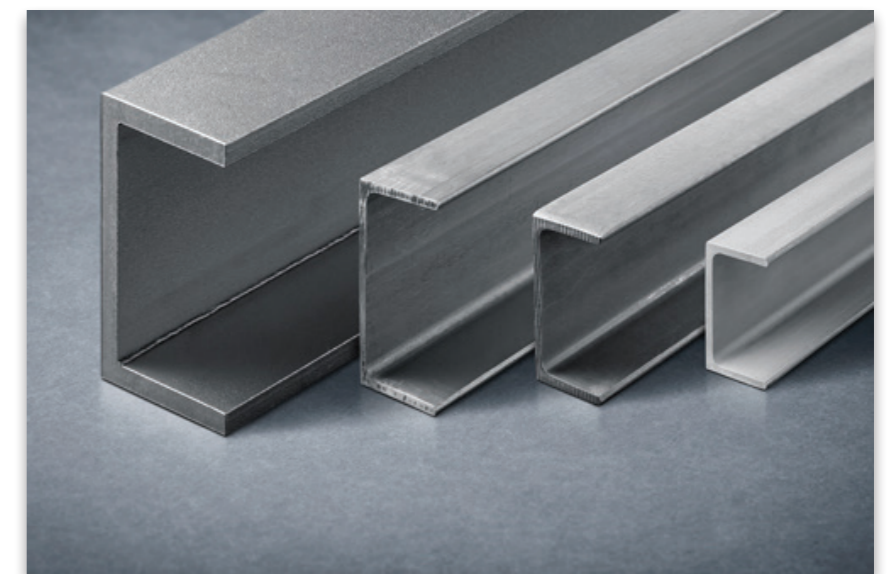


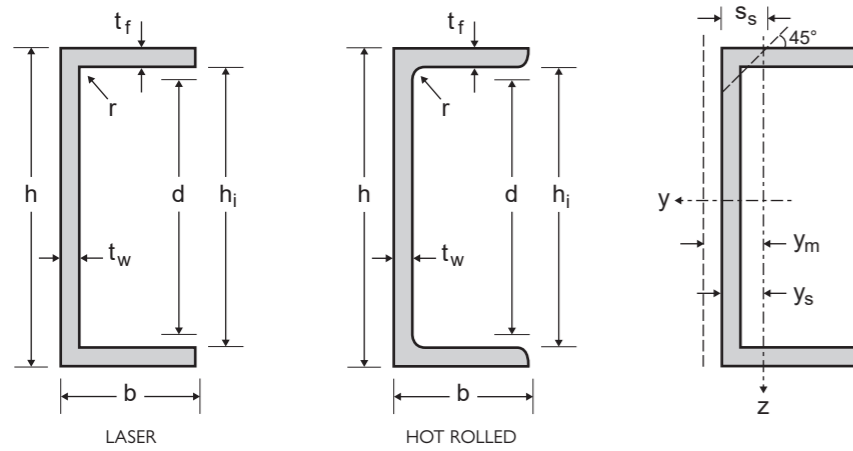
STAINLESS STEEL

UPA CHANNELS



**LASER WELDED &
HOT ROLLED PROFILES**

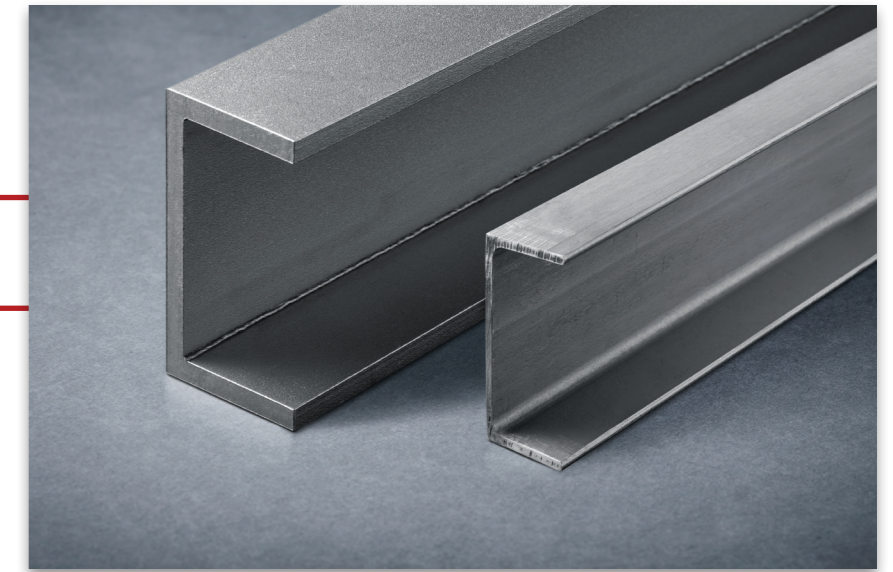
UPA MISCELLANEOUS CHANNELS WITH PARALLEL FLANGES



STAINLESS STEEL

Product Description

Dimensions: in accordance with EN 10365
 Tolerances: EN 10279: 2000
 Grade according to EN 10088-3: 1D
 Surface condition: blasted and pickled



General properties							Structural properties																
Designation		Dimensions					Dimensions for detailing		Strong axis y-y					Weak axis z-z									
	G kg/m	h mm	b mm	t _w mm	t _f mm	A mm ² x10 ²	h _i mm	d mm	I _y mm ⁴ x10 ⁴	W _{ely} mm ³ x10 ³	W _{ply} mm ³ x10 ³	i _y mm x10	A _{vz} mm ² x10 ²	I _z mm ⁴ x10 ⁴	W _{elz} mm ³ x10 ³	W _{plz} mm ³ x10 ³	i _z mm x10	S _s mm	I _t mm ⁴ x10 ⁴	I _w mm ⁶ x10 ⁹	y _s mm x10	y _m mm x10	
UPA 50x25x3	2.3	50	25	3	3	2.86	44.0	38.0*	10.60	4.24	5.14	1.93	1.54	1.65	0.93	1.05	0.76	7.77	0.12	0.00	0.73	1.43	
UPA 60x30x5	4.5	60	30	5	5	5.61	50.0	40.0*/ 46.0*	28.59	9.53	11.89	2.26	3.11	4.46	2.15	2.64	0.89	12.96	0.72	0.02	0.93	1.66	
UPA 80x40x4	4.9	80	40	4	4	6.10	72.0	68.0*	58.91	14.73	17.47	3.11	3.14	9.22	3.23	5.82	1.23	9.18	0.36	0.09	1.15	2.36	
UPA 80x40x5	6.1	80	40	5	5	7.65	70.0	60.0*/ 66.0*	72.41	18.10	22.17	3.08	4.20	11.18	3.95	4.56	1.21	13.55	0.99	0.08	1.17	2.26	
UPA 80x40x6	7.2	80	40	6	6	9.03	68.0	56.0*/ 64.0*	83.26	20.82	25.71	3.04	4.95	12.95	4.64	5.55	1.20	15.55	1.61	0.09	1.21	2.24	
UPA 100x50x4	6.3	100	50	4	4	7.83	92.0	84.0*/ 88.0*	121.29	24.26	29.04	3.93	4.23	18.61	5.14	5.47	1.54	11.55	0.64	0.19	1.38	2.90	
UPA 100x50x5	7.7	100	50	5	5	9.65	90.0	80.0*/ 86.0*	146.27	29.25	35.22	3.89	5.20	22.59	6.31	6.93	1.53	13.55	1.15	0.24	1.42	2.88	
UPA 100x50x6	9.1	100	50	6	6	11.43	88.0	76.0*/84.0*	169.64	33.93	41.13	3.85	6.15	26.33	7.44	8.43	1.52	15.55	1.89	0.28	1.46	2.86	
UPA 120x60x5	9.2	120	60	5	5	11.61	110.0	106.0*	257.09	42.85	50.78	4.71	6.11	39.89	9.22	9.77	1.85	12.96	1.22	0.60	1.67	3.53	
UPA 120x60x6	11.1	120	60	6	6	13.83	108.0	96.0*/ 104.0*	301.45	50.24	60.16	4.67	7.35	46.77	10.90	11.91	1.84	15.55	2.18	0.70	1.71	3.49	
UPA 130x65x6	12.0	130	65	6	6	15.03	118.0	106.0*/ 114.0*	387.39	59.60	71.03	5.08	7.95	60.10	12.88	13.87	2.00	15.55	2.33	1.06	1.83	3.80	
UPA 130x65x9	17.7	130	65	9	9	22.13	112.0	94.0*/ 108*	544.72	83.80	102.76	4.96	12.05	84.63	18.56	21.73	1.96	23.32	8.62	1.51	1.94	3.67	
UPA 140x70x7	15.1	140	70	7	7	18.83	126.0	122.0*	558.47	79.78	95.54	5.45	10.01	86.64	17.31	18.91	2.15	18.14	4.04	1.77	2.00	4.07	
UPA 150x75x6	13.9	150	75	6	6	17.43	138.0	134.0*	605.34	80.71	95.46	5.89	9.15	93.94	17.35	18.25	2.32	15.55	2.61	2.19	2.08	4.42	
UPA 150x75x9	20.3	150	75	9	9	25.4	132.0	128.0*	845.13	112.68	134.6	5.77	12.89	132.91	25.10	28.00	2.29	19.18	7.33	3.15	2.20	4.38	
UPA 160x80x6	14.9	160	80	6	6	18.63	148.0	140.0*	732.49	91.56	107.03	6.29	9.38	114.64	19.84	20.54	2.49	13.18	2.35	3.04	2.22	4.79	
UPA 160x80x8	19.7	160	80	8	8	24.59	144.0	140.0*	952.73	119.09	142.61	6.22	13.07	147.81	25.84	28.22	2.45	20.73	6.90	3.94	2.28	4.65	
UPA 180x90x8	22	180	90	8	8	27.54	164.0	160.0*	1361	151.22	177.91	7.03	13.94	213.33	33.04	59.53	2.78	17.18	6.20	10.98	2.54	5.35	
UPA 200x100x8	24.6	200	100	8	8	30.74	184.0	180.0*	1892.15	189.22	221.63	7.85	15.54	296.38	41.13	74.09	3.11	17.18	6.88	19.03	2.79	5.98	
UPA 200x100x10	30.4	200	100	10	10	38.02	180.0	176.0*	2294.04	229.4	271.31	7.77	19.22	360.04	50.48	90.95	3.08	21.18	13.34	22.57	2.87	5.91	

Other custom sizes are available upon request