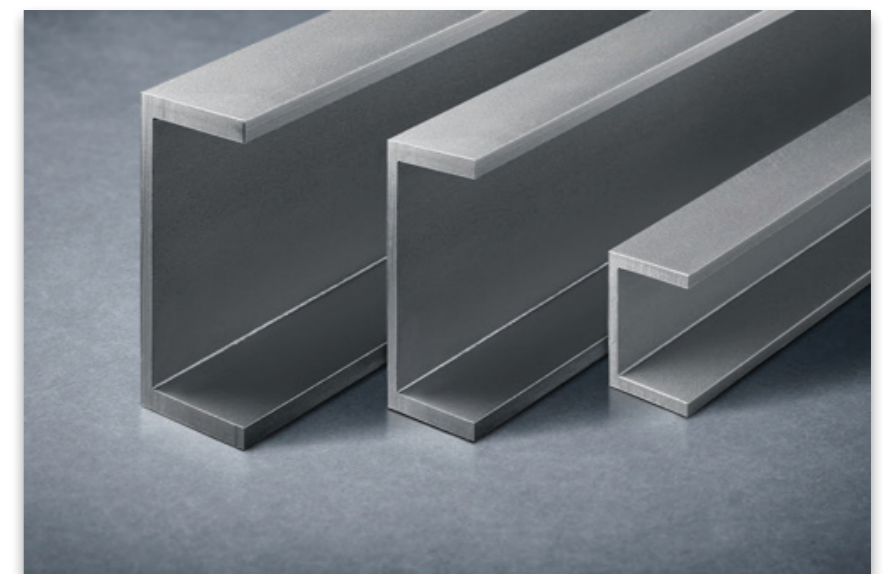


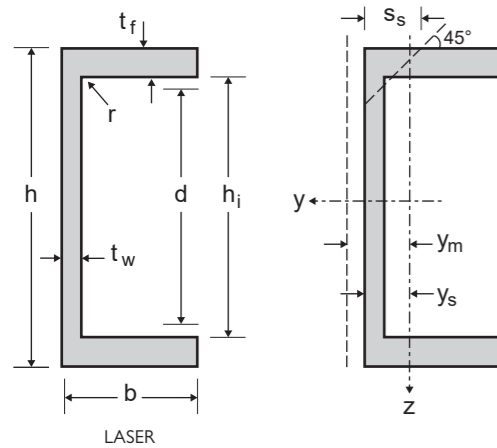
**STAINLESS STEEL**

# PFC CHANNELS



**LASER WELDED PROFILES**

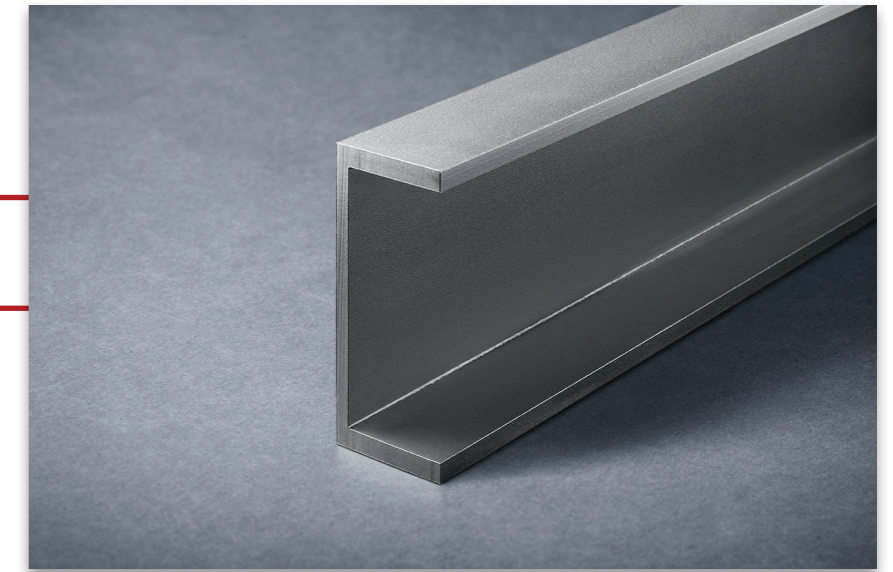
# PFC CHANNELS WITH PARALLEL FLANGES



## STAINLESS STEEL

### Product Description

Dimensions: in accordance with EN 10365  
 Tolerances: EN 10279: 2000  
 Grade according to EN 10088-3: 1D  
 Surface condition: blasted and pickled



| General properties |           |            |         |                      |                      |  | Structural properties    |         |   |   |   |                             |  |   |   |   |                             |                      |   |   |                             |                             |  |
|--------------------|-----------|------------|---------|----------------------|----------------------|--|--------------------------|---------|---|---|---|-----------------------------|--|---|---|---|-----------------------------|----------------------|---|---|-----------------------------|-----------------------------|--|
| Designation        |           | Dimensions |         |                      |                      |  | Dimensions for detailing |         | Strong axis y-y                                       |   |   |                             |  | Weak axis z-z   |   |   |                             |                      |   |   |                             |                             |  |
|                    | G<br>kg/m | h<br>mm    | b<br>mm | t <sub>w</sub><br>mm | t <sub>f</sub><br>mm | A<br>mm <sup>2</sup><br>×10 <sup>2</sup> | h <sub>i</sub><br>mm     | d<br>mm | I <sub>y</sub><br>mm <sup>4</sup><br>×10 <sup>4</sup> | W <sub>ely</sub><br>mm <sup>3</sup><br>×10 <sup>3</sup> | W <sub>ply</sub><br>mm <sup>3</sup><br>×10 <sup>3</sup> | i <sub>y</sub><br>mm<br>×10 | A <sub>vz</sub><br>mm <sup>2</sup><br>×10 <sup>2</sup> | I <sub>z</sub><br>mm <sup>4</sup><br>×10 <sup>4</sup> | W <sub>elz</sub><br>mm <sup>3</sup><br>×10 <sup>3</sup> | W <sub>plz</sub><br>mm <sup>3</sup><br>×10 <sup>3</sup> | i <sub>z</sub><br>mm<br>×10 | S <sub>s</sub><br>mm | I <sub>t</sub><br>mm <sup>4</sup><br>×10 <sup>4</sup> | I <sub>w</sub><br>mm <sup>6</sup><br>×10 <sup>9</sup> | y <sub>s</sub><br>mm<br>×10 | y <sub>m</sub><br>mm<br>×10 |  |
| PFC 100 × 50 × 10  | 10.1      | 100        | 50      | 5                    | 8.5                  | 12.67                                    | 83                       | 79      | 202.54  | 40.51   | 47.64   | 4.00                        | 4.76   | 31.92   | 9.85  | 11.15   | 1.59                        | 14.68                | 2.38  | 0.37  | 1.76                        | 3.48                        |  |
| PFC 125 × 65 × 15  | 14.6      | 125        | 65      | 5.5                  | 9.5                  | 18.20                                    | 106                      | 102     | 467.87  | 74.86   | 86.95   | 5.07                        | 6.56   | 78.71   | 18.71   | 20.88   | 2.08                        | 16.18                | 4.26  | 1.45  | 2.29                        | 4.63                        |  |
| PFC 150 × 75 × 18  | 17.7      | 150        | 75      | 5.5                  | 10                   | 22.17                                    | 130                      | 126     | 837.66  | 111.69  | 128.46  | 6.15                        | 7.92   | 129.00  | 26.47   | 29.12   | 2.41                        | 16.68                | 5.63  | 3.45  | 2.63                        | 5.39                        |  |
| PFC 150 × 90 × 24  | 23.8      | 150        | 90      | 6.5                  | 12                   | 29.81                                    | 126                      | 122     | 1139.99   | 152.00  | 175.05  | 6.18                        | 9.23   | 249.66  | 44.19   | 49.94   | 2.89                        | 19.68                | 11.27   | 6.94  | 3.35                        | 6.78                        |  |
| PFC 180 × 75 × 20  | 20.2      | 180        | 75      | 6                    | 10.5                 | 25.31                                    | 159                      | 155     | 1334.76   | 148.31  | 171.67  | 7.26                        | 10.40  | 144.86  | 28.67   | 30.97   | 2.39                        | 17.68                | 6.84  | 5.30  | 2.45                        | 5.07                        |  |
| PFC 180 × 90 × 26  | 26.1      | 180        | 90      | 6.5                  | 12.5                 | 32.59                                    | 155                      | 151     | 1783.82   | 198.20  | 227.74  | 7.40                        | 11.15  | 273.58  | 47.23   | 52.27   | 2.90                        | 20.18                | 12.79   | 10.65   | 3.21                        | 6.57                        |  |
| PFC 200 × 75 × 23  | 23.4      | 200        | 75      | 6                    | 12.5                 | 29.27                                    | 175                      | 171     | 1919.66   | 191.97  | 222.02  | 8.10                        | 11.52  | 168.35  | 33.74   | 36.74   | 2.40                        | 19.68                | 10.60   | 7.72  | 2.51                        | 5.17                        |  |
| PFC 200 × 90 × 30  | 29.8      | 200        | 90      | 7                    | 14                   | 37.26                                    | 172                      | 168     | 2481.75   | 248.17  | 286.43  | 8.16                        | 13.32  | 310.96  | 53.22   | 58.82   | 2.89                        | 22.18                | 17.78   | 14.71   | 3.16                        | 6.44                        |  |
| PFC 230 × 75 × 26  | 25.7      | 230        | 75      | 6.5                  | 12.5                 | 32.09                                    | 205                      | 201     | 2688.36   | 233.77  | 272.55  | 9.15                        | 14.40  | 179.76  | 34.74   | 37.33   | 2.37                        | 20.18                | 11.29   | 10.39   | 2.33                        | 4.82                        |  |
| PFC 230 × 90 × 32  | 32.3      | 230        | 90      | 7.5                  | 14                   | 40.37                                    | 202                      | 198     | 3460.33   | 300.90  | 349.01  | 9.26                        | 16.50  | 331.85  | 54.85   | 59.56   | 2.87                        | 22.68                | 18.76   | 19.84   | 2.95                        | 6.08                        |  |
| PFC 260 × 75 × 28  | 27.6      | 260        | 75      | 7                    | 12                   | 34.54                                    | 236                      | 232     | 3538.96   | 272.23  | 321.07  | 10.12                       | 17.62  | 184.65  | 34.33   | 36.65   | 2.31                        | 20.18                | 11.17   | 12.97   | 2.12                        | 4.43                        |  |
| PFC 260 × 90 × 35  | 35.0      | 260        | 90      | 8                    | 14                   | 43.78                                    | 232                      | 228     | 4651.39   | 357.80  | 418.00  | 10.31                       | 19.98  | 350.79  | 56.22   | 60.43   | 2.83                        | 23.18                | 20.00   | 25.73   | 2.76                        | 5.72                        |  |
| PFC 300 × 90 × 41  | 41.7      | 300        | 90      | 9                    | 15.5                 | 52.13                                    | 269                      | 265     | 7114.14   | 474.28  | 560.15  | 11.68                       | 25.93  | 402.60  | 63.08   | 68.24   | 2.78                        | 25.68                | 28.24   | 38.11   | 2.62                        | 5.38                        |  |
| PFC 300 × 100 × 46 | 45.6      | 300        | 100     | 9                    | 16.5                 | 57.05                                    | 267                      | 263     | 8068.80   | 537.92  | 628.63  | 11.89                       | 25.86  | 564.53  | 81.60   | 87.92   | 3.15                        | 26.68                | 35.36   | 55.26   | 3.08                        | 6.37                        |  |
| PFC 380 × 100 × 54 | 54.2      | 380        | 100     | 9.5                  | 17.5                 | 67.79                                    | 345                      | 341     | 14762.93  | 777.00  | 917.65  | 14.76                       | 34.80  | 640.72  | 89.13   | 95.30   | 3.07                        | 28.18                | 44.17   | 95.82   | 2.81                        | 5.86                        |  |
| PFC 430 × 100 × 64 | 64.9      | 430        | 100     | 11                   | 19                   | 81.14                                    | 392                      | 388     | 21587.15  | 1004.05   | 1204.15   | 16.31                       | 45.61  | 721.03  | 97.89   | 106.88  | 2.98                        | 31.18                | 61.45   | 133.73  | 2.63                        | 5.40                        |  |

Other custom sizes are available upon request