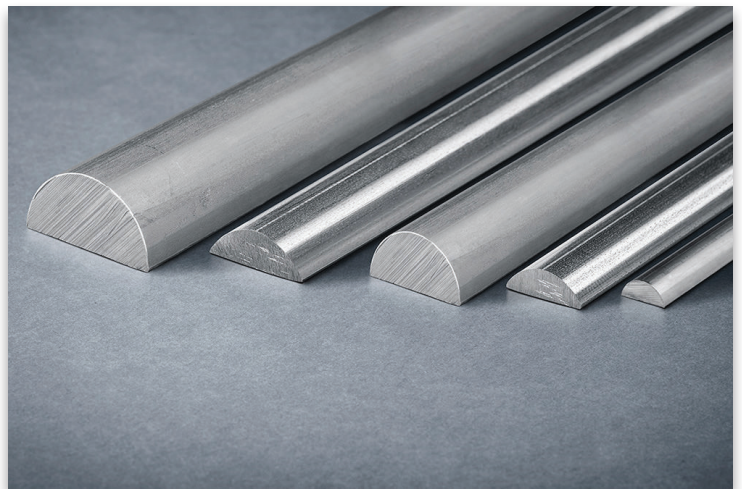
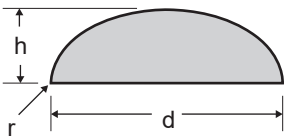
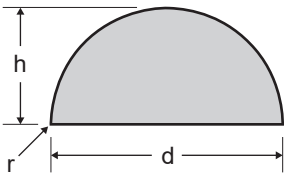


HALF ROUNDS



COLD FINISHED PROFILES

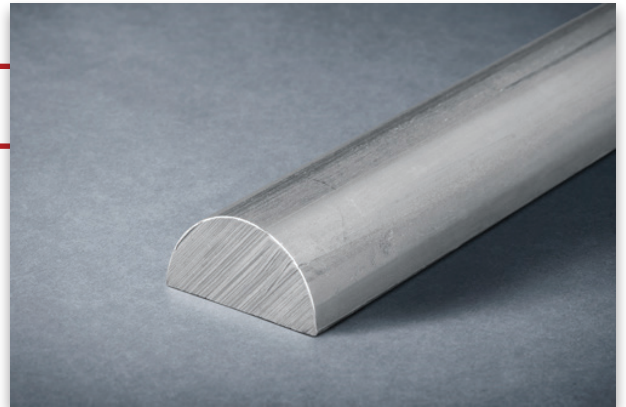
HALF ROUNDS COLD FINISHED



STAINLESS STEEL

Product Description

Tolerances: DIN 1018
Grade according to EN 10088-3: 1D
Surface condition: bright, 2H



General properties					
Designation		Dimensions			
	G kg/m	d mm	h mm	r mm	A mm ² x10 ²
10 x 3.5	0.20	10	3.5	< 1	0.25
12 x 6	0.45	12	6	< 1	0.57
12.7 x 3.8	0.28	12.7	3.8	< 1	0.34
14 x 4	0.32	14	4	< 1	0.40
15 x 5	0.43	15	5	< 1	0.54
16 x 6	0.57	16	6	< 1	0.71
16 x 8	0.80	16	8	< 1	1.01
18 x 5.3	0.54	18	5.3	< 1	0.68
18 x 9	1.02	18	9	< 1	1.27
19 x 4.8	0.51	19	4.8	< 1	0.64
20 x 4	0.44	20	4	< 1	0.55
20 x 6	0.68	20	6	< 1	0.85
20 x 10	1.26	20	10	< 1	1.57
21.5 x 5.5	0.66	21.5	5.5	< 1	0.83
25.4 x 6.3	0.89	25.4	6.3	< 1	1.12
25 x 7	0.99	25	7	< 1	1.24
25 x 10	1.49	25	10	< 1	1.86
30 x 9	1.54	30	9	< 1	1.92
31.8 x 6.3	1.10	31.8	6.3	< 1	1.38
31.8 x 8	1.42	31.8	8	< 1	1.78
38 x 9.5	2.02	38	9.5	< 1	2.52
38 x 15	3.39	38	15	< 1	4.24
40 x 8	1.76	40	8	< 1	2.20
40 x 20	5.03	40	20	< 1	6.28
50 x 12.5	3.49	50	12.5	< 1	4.37
50 x 25	7.85	50	25	< 1	9.82

Other custom sizes are available upon request