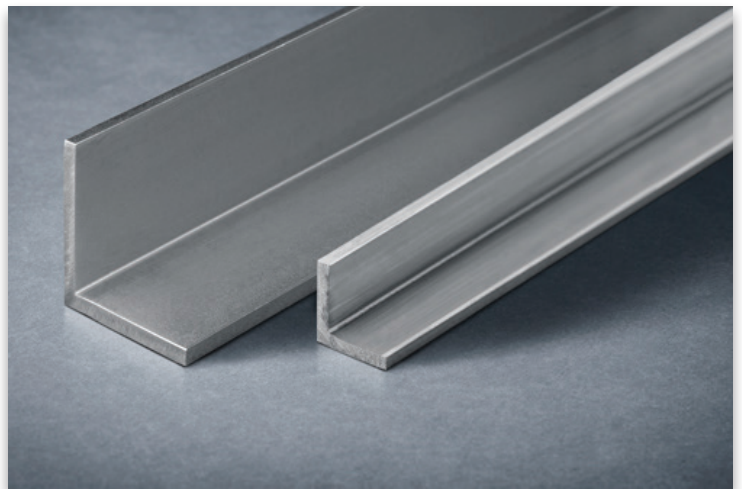




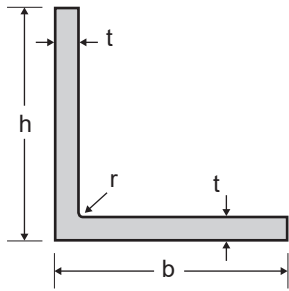
**STAINLESS STEEL**

# **EQUAL ANGLES COLD DRAWN**



**COLD DRAWN PROFILES**

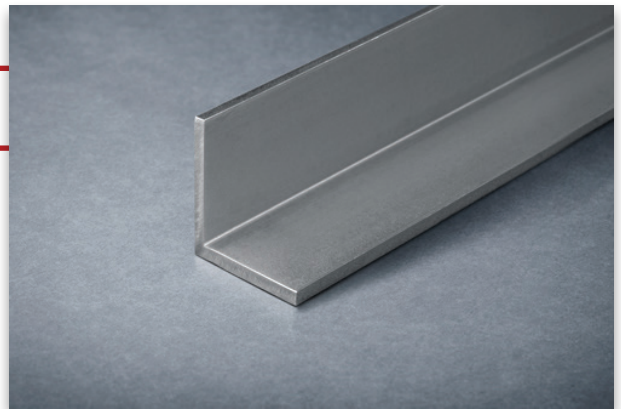
# EQUAL ANGLES COLD DRAWN



## STAINLESS STEEL

### Product Description

Dimensions and tolerance in accordance with DIN 59370  
Grade according to EN 10088-3: 1D  
Surface condition: bright



### General properties

Designation		Dimensions			
	G kg/m	h = b mm	t mm	r mm	A mm <sup>2</sup> x10 <sup>2</sup>
L 10 x 10 x 2	0.29	10	2	<1	0.36
L 15 x 15 x 2	0.45	15	2	<1	0.56
L 15 x 15 x 3	0.65	15	3	<1	0.81
L 20 x 20 x 2	0.61	20	2	<1	0.76
L 20 x 20 x 3*	0.89	20	3	<1	1.11
L 25 x 25 x 3*	1.13	25	3	<1	1.41
L 25 x 25 x 4	1.47	25	4	<1	1.84
L 30 x 30 x 3*	1.37	30	3	<1	1.71
L 30 x 30 x 4	1.79	30	4	<1	2.24
L 35 x 35 x 4	2.11	35	4	<1	2.64
L 35 x 35 x 5	2.6	35	5	<1	3.25
L 40 x 40 x 3	1.85	40	3	<1	2.31
L 40 x 40 x 4*	2.43	40	4	<1	3.04
L 40 x 40 x 5*	3	40	5	<1	3.75
L 45 x 45 x 3	2.09	45	3	<1	2.61
L 45 x 45 x 4	2.75	45	4	<1	3.44
L 45 x 45 x 5	3.4	45	5	<1	4.25
L 50 x 50 x 3	2.33	50	3	<1	2.91
L 50 x 50 x 4	3.07	50	4	<1	3.84
L 50 x 50 x 5*	3.8	50	5	<1	4.75
L 50 x 50 x 6	4.51	50	6	<1	5.64
L 50 x 50 x 7	5.21	50	7	<1	6.51
L 50 x 50 x 8	5.891	50	8	<1	7.364
L 60 x 60 x 5	4.603	60	5	<1	5.754
L 60 x 60 x 6*	5.475	60	6	<1	6.844
L 60 x 60 x 7	6.331	60	7	<1	7.914
L 60 x 60 x 8	7.171	60	8	<1	8.964

Other custom sizes are available upon request

\* Available also cold rolled, similar to DIN 1022.